



Select from a full range of home improvement supplies at the

**artSparx Store**

artSparx helps you create your style...NOW!



HOME DECOR

ARTISTS

MEMBERS

artSparxPro members

## Decorative Techniques: step-by-step



### Marbleizing

*For use on furniture, objects, and in fine arts techniques*

**Rating 2.5 - moderate**

Creating the impression of real marble in your home quickly elevates the presence of any furniture or object, adds color and charm and transforms everyday objects into beautiful works of art.



[rag rolling techniques](#)



[Color wash techniques](#)

[Antique Glazes](#)

[more decorative techniques...](#)

### materials

#### Acrylic Glaze Method

[Drop Cloths](#)

[Painters tape](#)

[Painters Buckets](#)

**White Dove**

[Artist Acrylic paint](#)

Water

[Artist brushes](#)

[Rags](#)

**latex varnish** Varnish

[Floetrol](#) or  
Glazing liquid

[Disposable gloves](#)

**Print this  
tutorial**



Printable version

[Ochre Marble](#)

A PDF file requires Adobe Acrobat Reader. You may download a free copy of Adobe's Acrobat Reader [here](#)

**Furniture  
glazing**



Discover the techniques to antique the base of the furniture seen here. This technique [antique stree effect](#) is perfectly suited for kitchen cabinets *and* bath vanities!

what's new



We started with a piece of furniture, found at the Salvation Army. It possesses a nice shape, but was in pretty poor condition. We decided on a light antique [stree glaze](#) on the cabinet and a strong, robust ochre marble for the top.

**Under coating**

**Step 1:** Remove all nails and repair any damaged or chipped areas. [Prime](#) as needed. Refer to the [artSparx basic furniture preparation](#) resource for tips and techniques....

**Step 2:** Apply the appropriate eggshell finish base color. A latex off white paint, such as **White Dove** , will work well. Allow to fully dry (8 hrs).

**Tip**

Looking at real marble for inspiration can help tremendously. Look closely at the direction of the veins and how they cross and weave together.

**Step 3:** Begin the first phase by applying broad, loose swatches of color. **Ben Moore latex ochre** is a nice, rich ochre color. Choose a direction you want the marble to flow in, usually at a slight angle from right to left, or vice versa.

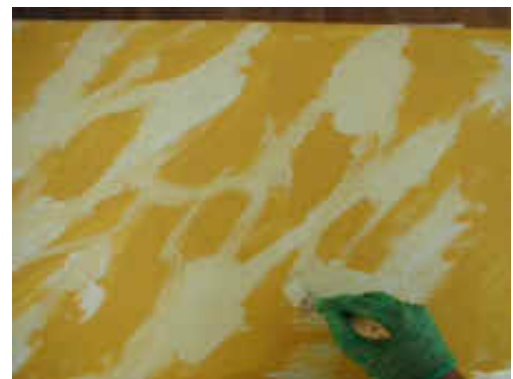
### More techniques

- ▶ [Color washing](#)
- ▶ [Glazing techniques](#)
- ▶ [Rag rolling](#)
- ▶ [Sponging](#)
- ▶ [Marbleizing](#)
- ▶ [Wood graining](#)
- ▶ [Stippling](#)
- ▶ [Striee glazing](#)
- ▶ [Dragging techniques](#)
- ▶ [Pouncing techniques](#)
  
- ▶ [Style archives](#)
- ▶ [Preparation of surfaces](#)
- ▶ [Know your materials](#)



Work in squiggly motions, leaving large open areas of the base coat showing through.

**Step 4:** Now add some cream tones, working into the white areas created from the previous process. Begin to connect these open areas by dragging paint from one area to another. You can lightly soften (blending the colors) with a dry brush. Use a light touch and gently brush over the 2 colors while still wet. Brush in the direction of the marble you are creating.



### skill levels

#### artSparx rating system

Designed to help you determine the difficulty and skill level any individual painting technique may represent

Rating: From 1 to 5

- 1- Beginner, easy
- 2- Apprentice, moderate
- 3- Glazer, mod.-difficult
- 4- Artist, difficult
- 5- Master, very difficult

### quick tip

#### Paint Sheen Tip: Windows, doors and trim:

Satin or semi-gloss paint sheen is commonly used for windows, doors and trim and generally creates a nice contrast to flat (matte) or eggshell wall finishes.

### Adding veins to your marble

The veining process can be fun and exciting. You can add as many layers as you want.

**Step 5:** Mixing Raw Umber, Raw Sienna and white, we create our first veins. First start in the direction you have created for your marble. Occasionally break off and connect one vein to another by moving in an opposite angle.

"Poetry is superior to painting in the presentation of words, and painting is superior to poetry in the presentation of facts"

Leonardo da Vinci  
1452-1519



**Tip** By applying different amounts of pressure on your brush you can create thick and thin lines randomly. 'Rolling' the brush with your fingers as you paint creates swirls and odd character lines that help boost the marble like impression.

#### Feature Step-by-Step

### Gilding Feature!



#### Silver leafing made easy.

Transform everyday objects into heirlooms. The process

known as *gilding* simply means the application of gold or silver leaf to a surface that has been properly prepared with an adhesive known as 'gold size'.

[Learn it!...](#)

**Step 6:** Once finished with this color, begin again with a secondary vein color. Mix Burnt Sienna, Raw Sienna and white together. Brush color over surface, painting larger areas if you wish, but make sure you apply the color in a wash, allowing the colors from underneath to show through.



**Step 7:** Now be dramatic. Add veins of bolder color. Keep this process simple, adding color in certain areas only. Mix Burnt Sienna and a little red together, this time don't add any white.

### Color palette

## Artist Acrylic paints:

- Raw Umber
- Raw Sienna
- Burnt Sienna
- Red
- White

### Feature tutorial

### Faux Delft tiles!



The loose, un-even quality of this faux technique makes painted Delft tiles an ideal decorative effect for the beginner or inexperienced do-it-yourselfer.

Irregular lines and loose hand painted renderings add character and old world charm, easily achieved without any prior painting experience.



You should now have an overall appearance similar to the picture below. It may look a bit messy, but at this stage that's OK.



### Veining - phase 2

Now you can add your white veins. This process spiders webs across the entire surface and helps reinforce the 'depth' of the marble.



### Book special



**[The Paint Effects Bible:  
100 Recipes for Faux  
Finishes](#)**

**The Paint Effects Bible** is a library of faux finishes: 100 of them. Each is described on a single spread with a large photograph of the finish plus step-by-step illustrations, an ingredients list, and detailed instructions for creating the effect.

A valuable source for professional and amateur decorators alike, this book comes in a handy, pocket-sized format with a concealed wire-binding that lays flat during use.

[more books](#)

**Step 8:** Work freely. Connect veins to each other, sometimes following lines that were created in earlier processes, sometimes deviating in sharp, dramatic directions. Vary the pressure on your brush to create thick and thin lines.



### Antiquing the marble surface

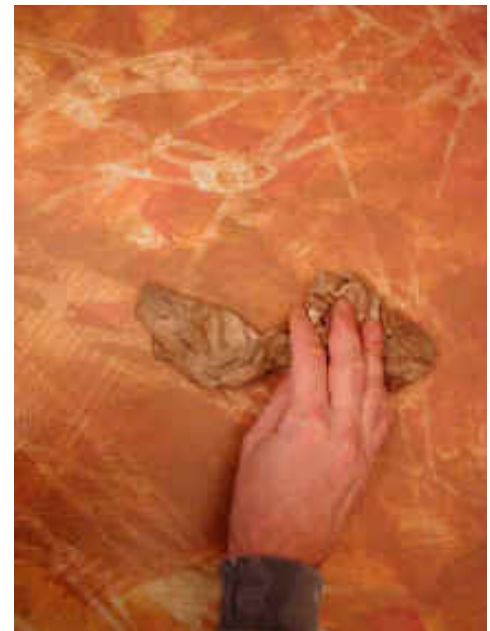
Now let's subdue the marble surface, creating an aged feeling while 'pushing' the colors back to a more muted tonality.



**Step 9:** Using Raw Umber, mix with Floetrol or latex glazing liquid.



**Step 10:** Use a damp rag and wet the marbled surface with water. This helps your glaze to move around and extends drying time. Brush the antique glaze you created loosely over marbled surface, then rub with a rag to soften the color. You can also blot or dab the surface to create a slight variation of texture.



**Note** On large surfaces work quickly and in segments. Apply color to one area, soften and blot with a clean rag, then continue on over surface.

### Applying a protective varnish coat

**Step 11:** To protect the surface, a water-based varnish, such as **latex varnish** , may be applied after marbled surfaces have

dried completely (4 hrs). A satin or semi-gloss sheen is best suited for this type of treatment.



**Step 12:** [Clean](#) up with warm, soapy water.

**Step 13:** [Dispose](#) of remaining rags, brushes and paints properly.

Your completed piece!







create the [antique stree cabinet glaze](#) now!

[Have a question?](#)

[return to top](#)

[more decorative treatments](#)

---

---

[Home Decor](#) • [Artists](#) • [Members](#) • [Store](#) • [Site Map](#)

Join the artSparx community! Become a [registered member](#) now.

[contact@artsparx.com](mailto:contact@artsparx.com)

**Capture your target market!**  
Advertise at artSparx and reach over  
100,000 unique visitors per month!  
[more info](#)

[Become a link partner](#)  
[Add features to your site! Free](#)

[Media Support Center](#)

[www.gildedplanet.com](http://www.gildedplanet.com)    [www.architecturalfx.com](http://www.architecturalfx.com)

Copyright 2001-2004 artSparx.com. Except as otherwise expressly permitted under law, no copying, redistribution, retransmission, publication or commercial exploitation of material or concept are permitted without the express written permission of artSparx.com and Copyright owner. [legal](#)

San Francisco, Ca. 415.407.5097